

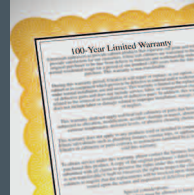
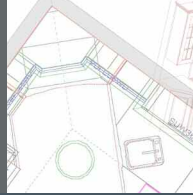


VALUE

ENJOY THESE FEATURES AT NO EXTRA CHARGE!

FREE CUSTOM MODIFICATIONS

NO CHARGE FOR HEIGHT, WIDTH, AND DEPTH CUSTOM MODIFICATIONS. FREEDOM TO DESIGN LIKE NEVER BEFORE!
SOME SIZE LIMITATIONS APPLY.



100-YEAR WARRANTY

EUROPA WARRANTS TO THE ORIGINAL PURCHASER THAT THE CABINETRY WILL BE FREE FROM MANUFACTURER DEFECTS FOR 100 YEARS FROM THE DATE OF PURCHASE

ENVIRO-FRIENDLY MATERIALS

MANUFACTURED WITH ENVIRONMENTALLY-FRIENDLY EPP-CERTIFIED ENGINEERED WOOD PANELS

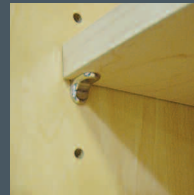


EASY-TO-CLEAN INTERIORS

WHITE OR NEUTRAL WOODGRAIN MELAMINE INTERIOR

EXPERT JOINERY

5/8" THERMOSET MELAMINE BOARD WITH DOWEL-AND-GLUE JOINERY AND FULLY-CAPTURED, 5/8" MACHINE-FITTED BACK PANEL

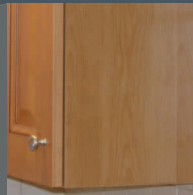


ADJUSTABLE SHELVING

5/8"-THICK, ADJUSTABLE, FULL-DEPTH SHELVING WITH EDGE-BANDING AND LOCKING, METAL SHELF CLIPS

FLUSH FINISHED ENDS

FLUSH BOTTOM, TOP, AND FINISHED ENDS FOR A FURNITURE-LIKE APPEARANCE AND EASY INSTALLATION

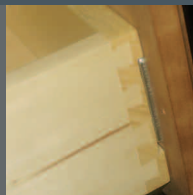


ADJUSTABLE HINGES

STEEL, FULLY-CONCEALED, CLIP-ON/OFF, SELF-CLOSING, 107°, 6-WAY-ADJUSTABLE HINGE WITH A LIFETIME MANUFACTURER'S WARRANTY

WOOD DOVETAIL DRAWER

5/8"-THICK, DOVETAILED SIDES AND BACK, 1/4"-THICK, FULLY-CAPTURED BOTTOM, AND FULL-EXTENSION, 75 LB.-RATED TANDEM, UNDERMOUNT GLIDES WITH SOFT CLOSE AND A LIFETIME WARRANTY

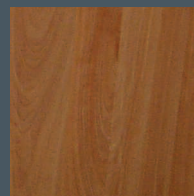
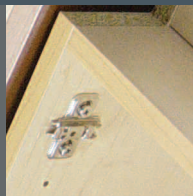


STRETCHERS AND BLOCKING

FULL-WIDTH STRETCHERS AND TOE KICK BLOCKING, FRONT AND REAR, PROVIDE EXTRA STRENGTH AND MOUNTING SURFACE FOR COUNTER TOP AND OPTIONAL COORDINATING TOE KICK COVER

FULLY EDGE-BANDED

FRONT EDGES HAVE MATCHING WOOD OR COORDINATING PVC EDGE-BANDING; TOPS, BOTTOMS, AND BACKS OF END PANELS ARE ALSO EDGE-BANDED. PROTECTS AGAINST MOISTURE



COMPLETE CORE COVERAGE

TOPS, BOTTOMS AND UNFINISHED ENDS ARE COVERED IN NEUTRAL WOODGRAIN MELAMINE; FINISHED ENDS, INTERIORS AND PANELS ARE COVERED IN COLOR-COORDINATED MATERIAL

IT JUST MAKES SENSE TO BUY EUROPA

CABINET BOX:

- 1 EUROPA CABINETRY IS MANUFACTURED WITH ENVIRONMENTALLY-FRIENDLY EPP-CERTIFIED ENGINEERED WOOD PANELS
- 2 5/8" THERMOSET MELAMINE BOARD WITH DOWEL-AND-GLUE JOINERY AND FULLY-CAPTURED, MACHINE-FITTED BACK PANEL
- 3 FLUSH BOTTOM, TOP, AND FINISHED ENDS FOR A FURNITURE-LIKE APPEARANCE AND EASY INSTALLATION
- 4 FOOTED MOLDINGS AND LIGHT RAILS SECURE TO FLUSH TOPS AND BOTTOMS OF WALL CABINETS
- 5 FULL-WIDTH STRETCHERS FRONT AND REAR PROVIDE SOLID SUPPORT AND MOUNTING SURFACE FOR COUNTER TOPS
- 6 TOE-SPACE BLOCKING FRONT AND REAR PROVIDES STRENGTH FOR OPTIONAL COORDINATING TOE KICK COVER

EXTERIOR:

- 7 TOPS, BOTTOMS AND UNFINISHED ENDS ARE COVERED IN NEUTRAL WOODGRAIN MELAMINE, PROVIDING COMPLETE COVERAGE OF THE ENGINEERED WOOD CORE; FINISHED ENDS, INTERIORS AND PANELS ARE COVERED IN COLOR-COORDINATED MATERIAL
- 8 FRONT EDGES HAVE MATCHING WOOD OR COORDINATING PVC EDGE BANDING; TOPS, BOTTOMS, AND BACKS OF END PANELS ARE ALSO EDGE BANDED

INTERIOR:

STANDARD WHITE OR NEUTRAL WOODGRAIN MELAMINE INTERIOR; OPTIONAL COORDINATING INTERIOR AVAILABLE

SHELVING:

5/8"-THICK, ADJUSTABLE, FULL-DEPTH SHELVING WITH EDGE BANDING AND METAL SHELF CLIPS

HINGES:

STEEL, FULLY-CONCEALED, CLIP-ON/OFF, SELF-CLOSING, 107°, 6-WAY-ADJUSTABLE HINGE WITH A LIFETIME MANUFACTURER'S WARRANTY

STANDARD DRAWER SYSTEMS:

WOOD DOVETAIL DRAWER

5/8"-THICK, DOVETAILED SIDES AND BACK, 1/4"-THICK, FULLY-CAPTURED BOTTOM, AND FULL-EXTENSION, 75-POUND-RATED TANDEM, UNDERMOUNT GLIDES WITH SOFT CLOSE. SOFT CLOSE ALLOWS DRAWER TO CLOSE QUIETLY WITH JUST A TOUCH. STANDARD ON CABINETS WITH ALL DOOR STYLES EXCEPT ACRILUX. WOOD DOVETAIL PULL-OUTS, WITHOUT SOFT CLOSE, ARE AVAILABLE AS AN UPGRADE

METAL DRAWER

GRAY METAL SIDES, 5/8"-THICK, GRAY MELAMINE BACK AND BOTTOM, AND FULL-EXTENSION, 75-POUND-RATED TANDEM, UNDERMOUNT GLIDES WITH SOFT CLOSE. SOFT CLOSE ALLOWS DRAWER TO CLOSE QUIETLY WITH JUST A TOUCH. STANDARD ON CABINETS WITH ACRILUX DOOR STYLES AND OPTIONAL ON CABINETS WITH ALL OTHER DOOR STYLES. METAL PULL-OUTS, WITHOUT SOFT CLOSE, ARE AVAILABLE AS AN UPGRADE

ALL GLIDES HAVE A LIFETIME MANUFACTURER'S WARRANTY

