



ENTREE

EUROPA  
by Norcraft



THIS PAGE:  
E Shaker : Cherry Amber  
Boston Kitchen Distributors  
Designer: Cynthia Gatto



E Shaker : Cherry Amber  
Boston Kitchen Distributors  
Designer: Cynthia Gatto

FRONT COVER:  
E Shaker : Cherry Amber  
Boston Kitchen Distributors  
Designer: Cynthia Gatto

**ENTRÉE : CABINETS FOR LIFE**

Our stock cabinetry line with fast delivery and the fine styles and finishes you demand.

DOOR STYLES	4-7
ACCESSORIES	8-11
KEEP IT GREEN!	12
ADA COMPATIBLE	12
EXTRA BENEFITS	13
CONSTRUCTION FEATURES	14-15



Entrée Foil Square : Smooth White



Entrée Foil Square : Smooth White



Entrée Foil Square : Smooth White



Entrée Foil Square RP : Smooth White

Entrée Foil Square RP : Smooth White

ENTRÉE THERMOFOIL AND MELAMINE



Shown : Matte White

ENTRÉE MELAMINE



Shown : Smooth White

ENTRÉE FOIL ROUND



Shown : Matte White

ENTRÉE FOIL ROUND RP



Shown : Smooth White

ENTRÉE FOIL SQUARE



Shown : Matte White

ENTRÉE FOIL SQUARE RP



Shown : Smooth White

ENTRÉE FOIL BEAD BOARD

Selected door styles available in Matte White and Smooth White



*E Raised : Maple Amber  
Boston Kitchen Distributors  
Designer: Mary Porzelt*



*E Raised : Maple Amber  
Boston Kitchen Distributors  
Designer: Mary Porzelt*

**ENTRÉE WOOD**



**E SLAB  
OMC**

Shown : Oak Golden



**E SHAKER  
OMC**

Shown : Maple Amber



**E RAISED  
OMC**

Shown : Cherry Chestnut



Finishes shown here represent the scope of the line and should not be used for color matching.



*E Shaker : Cherry Amber  
Shown with optional Wood Dovetail Drawer  
and Cutlery Insert  
Boston Kitchen Distributors  
Designer: Cynthia Gatto*



*E Shaker : Cherry Amber  
Boston Kitchen Distributors  
Designer: Cynthia Gatto*



## ACCESSORIES

GLASS SHELVES  
WOOD DRAWER DIVIDER  
METAL DRAWER DIVIDER  
DEEP DRAWER DIVIDER  
PLATE HOLDER  
VERTICAL WINE RACK  
STEMWARE RACK  
BOTTLE RACK  
DECORATIVE HARDWARE  
DOORS WITH GLASS  
MELAMINE DRAWER  
WOOD DOVETAIL DRAWER  
DEEP DRAWER  
EURO LEG  
BOOKCASE  
DECORATIVE OPEN SHELVES  
ADJUSTABLE HINGE  
SOFT CLOSE  
TILT OUT TRAY  
MELAMINE PULL-OUT  
WOOD DOVETAIL PULL-OUT  
CHROME LAZY SUSAN  
WOOD LAZY SUSAN  
LIGHTING  
END CABINET

WHATNOT CABINET  
MICROWAVE CABINET  
OVEN CABINET  
RANGE CABINET  
TRAY BASE  
TRASH CAN BASE  
RECYCLE BIN BASE  
APPLIANCE PANELS  
ADA SINK BASE  
DECORATIVE PANELING  
DECORATIVE MOLDINGS  
LIGHT RAIL  
VALANCE  
LETTER FILE  
PENINSULA CABINET  
DRAWER BASE  
DESK BASE  
DESK DRAWER BASE  
HANGING DRAWER  
UTILITY CABINET  
MEDICINE CABINET  
LINEN CABINET



TRAY  
BASE



END  
CABINET



STAINLESS STEEL  
DRAWER DIVIDER



WOOD  
LAZY SUSAN



INTERIOR  
LIGHTING



MICROWAVE  
CABINET



TRASH CAN  
BASE



MULLION  
DOOR



MELAMINE  
DRAWER



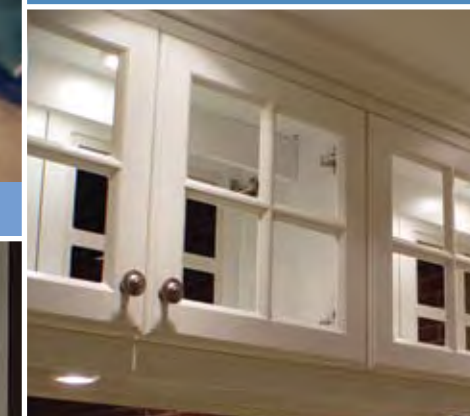
BOOKCASE



WINE RACK



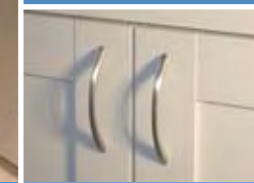
DEEP DRAWER  
WITH DIVIDERS



FRAME  
DOORS



DOVETAIL  
PULL-OUTS



DECORATIVE  
HARDWARE



HANGING  
TRASH BINS



BOOKCASE



WINE RACK



OPEN WALL  
SHELF



PENINSULA  
CABINETS



DRAWER BASE



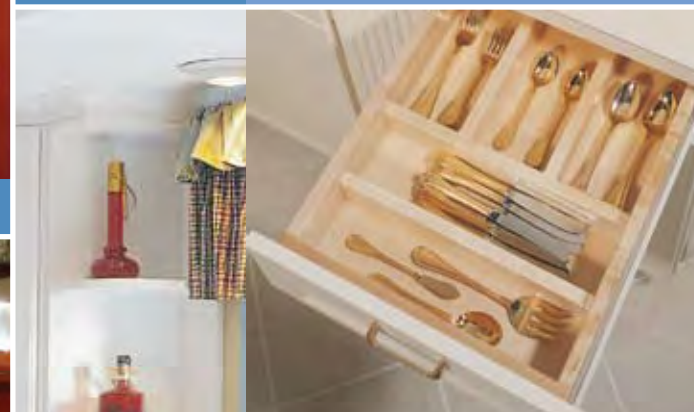
MEDICINE  
CABINET



ADJUSTABLE  
HINGE



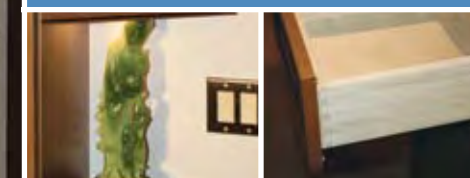
METAL  
TILT-OUT TRAY



WOOD  
DIVIDERS



OPEN WALL  
SHELF



TRIANGLE  
CABINET



PRECISION  
ALIGNMENT



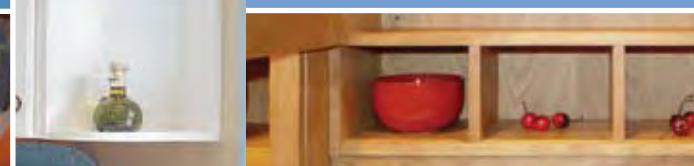
MEDICINE  
CABINET



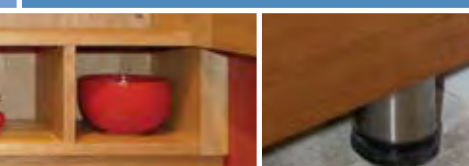
MOLDINGS



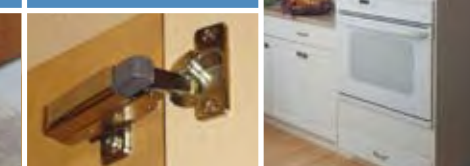
GLASS SHELVES



LETTER FILE



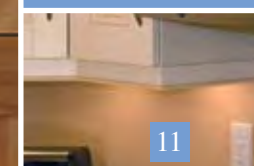
EURO-STYLE FEET



SOFT CLOSE



OVEN CABINET



LIGHT RAIL



*E Shaker : Cherry Amber  
Boston Kitchen Distributors  
Designer: Cynthia Gatto*

**ENVIRONMENTAL STEWARDSHIP**

Preserving our environment and reducing our footprint is integrally linked with our objectives and product. Our standard construction is made to comply with CARB formaldehyde standards using Environmentally Preferred Product (EPP) for case and door construction material. Our company is certified to the KCMA Environmental Stewardship Program (ESP) and can supply products that contribute to the USGBC Leadership in Environmental Design (LEED) credits for recycled content, regional material, rapidly renewable material, FSC-certified wood and low-emitting materials. Ask your Dealer how we can supply product to your unique specifications.



**WE MEAN “FULL ACCESS”**

“Full access” is how we refer to our “frameless” cabinet construction, but because we believe the kitchen should work for everyone, we’ve also designed cabinets that conform to the requirements of the American’s with Disabilities Act. Ask your Dealer about our convertible cabinets for handicap-accessible kitchens or convertible apartments.

**ASK YOUR DEALER FOR DETAILS**

**WARRANTY**

We think our 100-Year Limited Warranty is the best in the business.

**CREATE-A-CABINET**

Entrée cabinets are custom-made when your order is placed and are available in hundreds of configurations and thousands of sizes. Use our Create-A-Cabinet program for custom modifications without increasing lead times.

**MOLDINGS AND TRIMS**

The beauty is in the details. Don’t forget the moldings, trims, edging, valances, end panels, legs, and other decorative touches to personalize your kitchen.

**FAST LEAD TIMES**

With millions of dollars of doors, drawers and moldings in inventory, Entrée orders deliver in just three to four weeks.



*E Raised : Maple Amber  
Boston Kitchen Distributors  
Designer: Mary Porzelt*

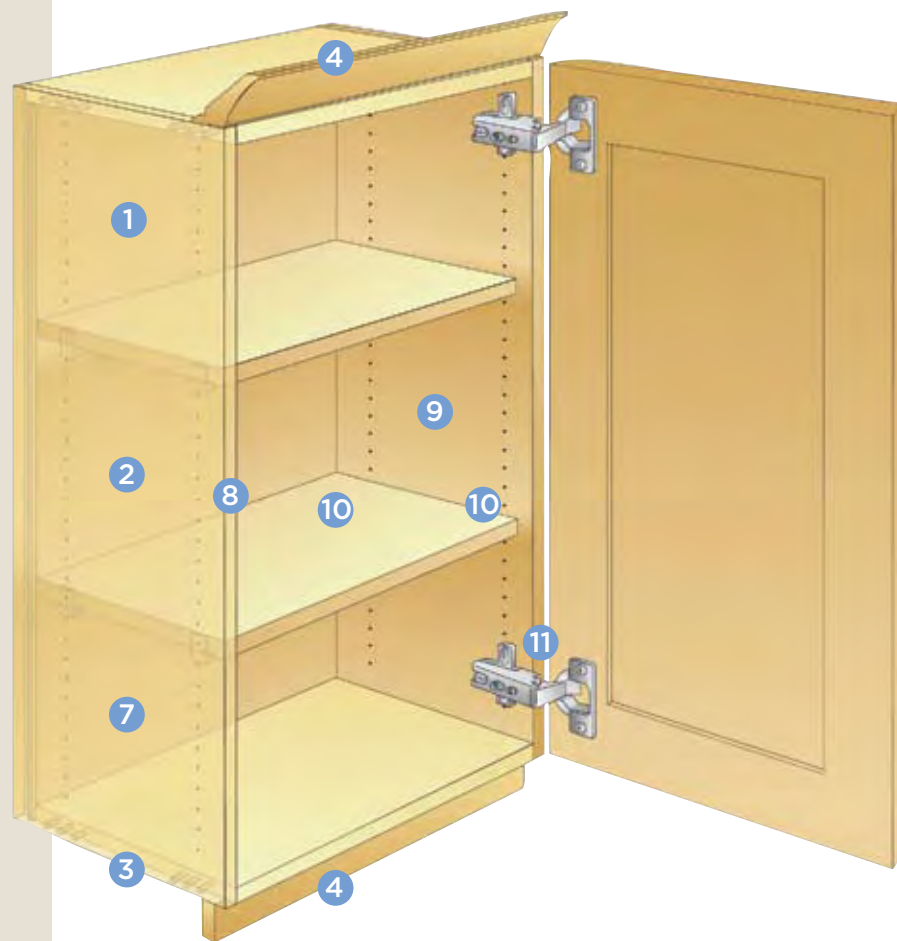


*E Raised : Maple Amber  
Boston Kitchen Distributors  
Designer: Mary Porzelt*



*E Shaker : Cherry Amber  
Boston Kitchen Distributors  
Designer: Cynthia Gatto*

## PERFORMANCE CONSTRUCTION



- 1 CABINET BOX IS MANUFACTURED WITH ENVIRONMENTALLY-FRIENDLY, 5/8"-THICK, EPP-CERTIFIED ENGINEERED WOOD.
- 2 DOWEL-AND-GLUE JOINERY AND FULLY-CAPTURED, MACHINE-FITTED BACK PANEL

- 3 FLUSH BOTTOM, TOP, AND FINISHED ENDS FOR A FURNITURE-LIKE APPEARANCE AND EASY INSTALLATION
- 4 OPTIONAL FOOTED MOLDINGS AND LIGHT RAILS SECURE TO FLUSH TOPS AND BOTTOMS OF WALL CABINETS
- 5 FULL-WIDTH STRETCHERS FRONT AND REAR PROVIDE SOLID SUPPORT AND MOUNTING SURFACE FOR COUNTER TOPS
- 6 TOE-SPACE BLOCKING FRONT AND REAR PROVIDES STRENGTH FOR OPTIONAL COORDINATING TOE KICK COVER
- 7 EXTERIOR TOPS, BOTTOMS AND UNFINISHED ENDS ARE COVERED IN WHITE OR NEUTRAL WOODGRAIN MELAMINE, PROVIDING COMPLETE COVERAGE OF THE ENGINEERED WOOD CORE; FINISHED ENDS, INTERIORS AND PANELS ARE COVERED IN COLOR-COORDINATED MATERIAL

- 8 FRONT EDGES HAVE COORDINATING PVC EDGE-BANDING; TOPS, BOTTOMS, AND BACKS OF END PANELS ARE ALSO EDGE-BANDED

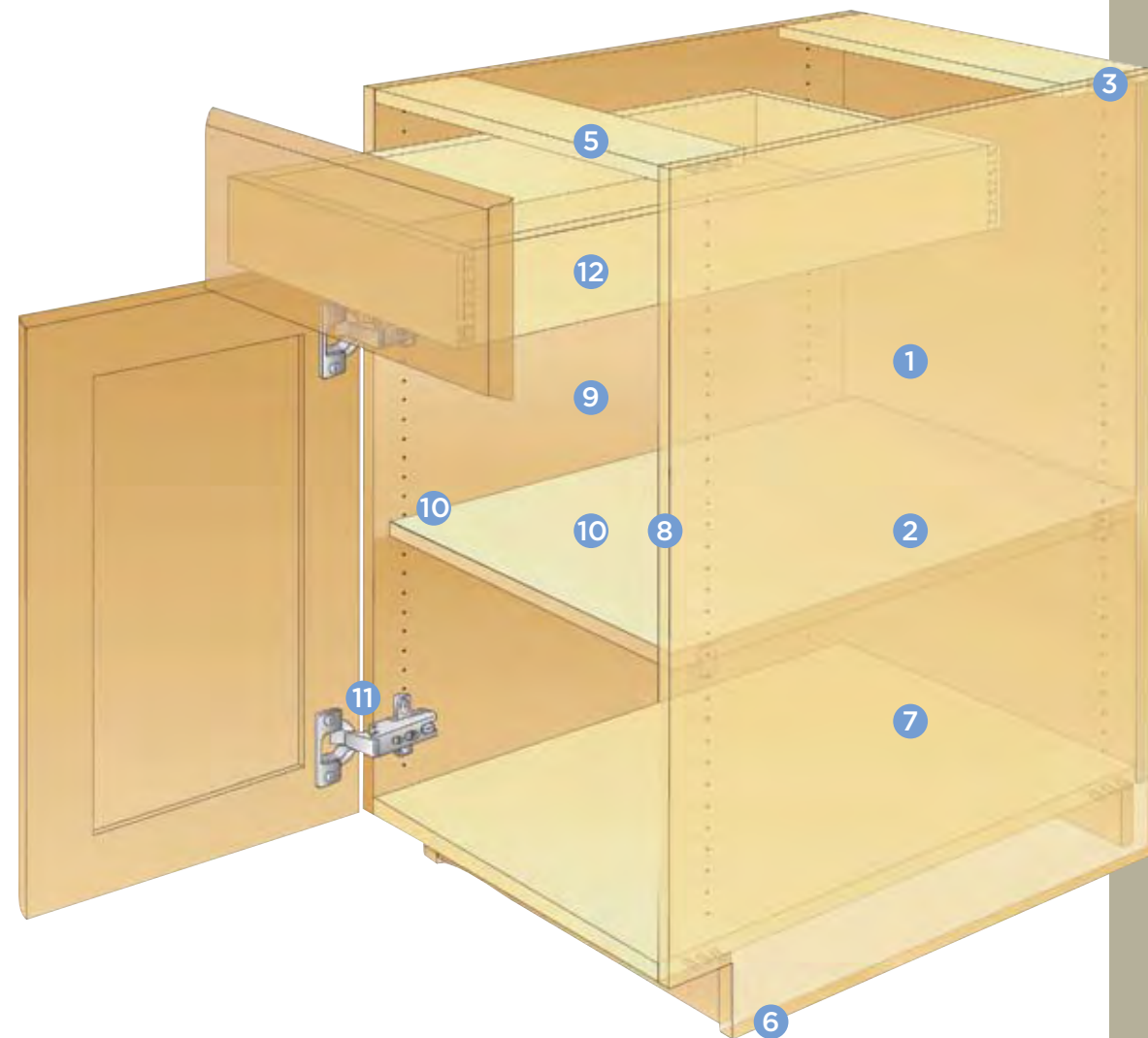
- 9 STANDARD INTERIOR IS WHITE OR NEUTRAL WOODGRAIN MELAMINE; OPTIONAL COORDINATING MELAMINE INTERIOR ON CABINETS WITH VISIBLE INTERIORS

- 10 SHELVING IS 5/8"-THICK, ADJUSTABLE, FULL-DEPTH SHELVING WITH EDGE-BANDING AND METAL SHELF CLIPS

- 11 HINGES ARE STEEL, FULLY-CONCEALED, CLIP-ON/OFF, SELF-CLOSING, 107°, 6-WAY-ADJUSTABLE HINGE WITH A LIFETIME MANUFACTURER'S WARRANTY; SOFT-CLOSE CLIP-ONS OPTIONAL

- 12 STANDARD MELAMINE DRAWER IS 5/8"-THICK, DOWELED MELAMINE SIDES AND BACK, 1/4"-THICK, FULLY-CAPTURED BOTTOM, WITH 3/4-EXTENSION, 75-POUND-RATED, SIDE-MOUNTED, QUIET, EPOXY-COATED GLIDES. FULL-EXTENSION GLIDES AND MELAMINE PULL-OUTS ARE AVAILABLE AS AN UPGRADE

OPTIONAL WOOD DOVETAIL DRAWER IS 5/8"-THICK, DOVETAILED SIDES AND BACK, 1/4"-THICK, FULLY-CAPTURED BOTTOM, AND FULL-EXTENSION, 75-POUND-RATED TANDEM, UNDERMOUNT GLIDES. OPTIONAL SOFT CLOSE



ALLOWS DRAWER TO CLOSE QUIETLY WITH JUST A TOUCH. WOOD DOVETAIL PULL-OUTS, WITH OR WITHOUT SOFT CLOSE, ARE AVAILABLE AS AN UPGRADE

ALL GLIDES HAVE A LIFETIME MANUFACTURER'S WARRANTY

## ENTRÉE ADVANTAGES

- ▶ DOORS STYLES IN WOOD, THERMOFOIL, AND MELAMINE
- ▶ MELAMINE DRAWERS AND PULL-OUTS. OPTIONAL WOOD DOVETAIL DRAWERS & PULL-OUTS WITH FULL-EXTENSION, UNDERMOUNT GLIDES & SOFT CLOSE
- ▶ DELIVERS IN AN AVERAGE OF 3 WEEKS
- ▶ 6-WAY-ADJUSTABLE CLIP-ON HINGES FOR PRECISE DOOR ALIGNMENT
- ▶ ALL HINGES AND GLIDES COVERED BY A LIMITED LIFETIME WARRANTY
- ▶ UNOBSTRUCTED ACCESS
- ▶ ADJUSTABLE FULL-DEPTH SHELVES FOR MORE STORAGE SPACE
- ▶ FLUSH FINISHED ENDS FOR A FURNITURE-LIKE APPEARANCE AND EASY INSTALLATION
- ▶ EASY-TO-CLEAN MELAMINE INTERIORS
- ▶ COMPREHENSIVE SELECTION OF MATCHING MOLDINGS
- ▶ OVER 40 CONVENIENCE ACCESSORIES
- ▶ CREATE-A-CABINET PROGRAM ALLOWS MODIFICATIONS WITHOUT INCREASING LEAD TIMES
- ▶ EASY TO INSTALL
- ▶ MADE IN THE U.S.A.
- ▶ 100-YEAR LIMITED WARRANTY



*Entrée Foil Round RP : Smooth White  
Cape & Island Kitchens  
Designer: Joe Cheney*



EUROPA  
by Norcraft